



2019

PRODUCT CATALOGUE

WLAN | XDSL | 3G/4G | FTTH-GEAPON/GPON | SWITCH | POE SWITCH | MEDIA CONVERTOR | SFP FIBER MODULES

AIRPRO TECHNOLOGY INDIA PVT. LTD.

Contact us : sales@airpro.in | www.airpro.in

HIGH POWER Wireless Access Point

Small and Low Profile Access Point

Support Multiple SSID

Supports 24V/1A PoE



Standard 802.11ac/b/g/n, MIMO technology

Built in 5dBi MIMO Antenna

Wireless Security

AirPro indoor and outdoor access point is suitable for business-class environments such as hotels, airports, coffee shops, shopping centre, sporting venues, and university campuses. With transfer rates of up to 1200Mbps in dual band 2.4 and 5 GHz frequency range, the device provides an adequate level of service to all users who connect with legacy 802.11b/g adapters in addition to the latest 802.11n adapters for faster downloads and instant communication. Integrated Power over Ethernet (PoE) allows installation in areas where power outlets are not readily available. Internally equipped with 2X2 multiple-input, multiple-output (MIMO) antennas improve range and maximize data rates. Field-tested to wirelessly cover 5-7 hotel rooms at an indoor operating distance of up to 100 meters and allow simultaneous accesses by up to 60-80 users.

XDS100

300Mbps, 100mW Indoor Ceiling Access Point



- 100mW, High Power 300Mbps Access Point.
- 2*5 dBi Antenna for long wireless coverage.
- Support 24V/1A PoE or 48V/1A PoE.
- Support Multiple SSID.
- Support 802.1Q VLAN.
- Multiple Operation mode - Gateway, Repeater, WDS.

XDS9500S

300Mbps, 500mW Indoor High Power Ceiling Access Point



- 500mW, High Power 300Mbps Access Point.
- 2*5 dBi MIMO Antenna.
- WPA/WPA2 encryptions for defence against security threats.
- Seamlessly compatible with 802.11b/g/n devices.
- Support 24V/1A PoE or 48V/1A PoE.
- Support Multiple SSID.
- Support 802.1Q VLAN.
- Multiple Operation mode - Gateway, Repeater, WDS.

AIR-M600

600Mbps, Dual Band 11ac High Power Access Point



- 500mW, High Power 600Mbps Access Point.
- 3*5 dBi MIMO Antenna.
- WPA/WPA2 encryptions for defence against security threats.
- Seamlessly compatible with 802.11a/b/g/n devices.
- Support 24V/1A PoE or 48V/1A PoE.
- Support Multiple SSID.
- Support 802.1Q VLAN.
- Multiple Operation mode - Gateway, Repeater, WDS.



Ceiling Design and PoE Supply

Ceiling mount design to easily mount to a wall or ceiling

IEEE 802.3af 48V PoE support to make construction effortless and flexible

XDS9510S

300Mbps, 300mW Indoor High Power Ceiling AP



- 300mW, High Power 300Mbps Access Point • 2*5 dbi MIMO Antenna.
- WPA/WPA2 encryptions for defence against security threats.
- Seamlessly compatible with 802.11b/g/n devices.
- Support 24V/1A PoE or 48V/1A PoE.
- Support Multiple SSID • Support 802.1Q VLAN.
- Multiple Operation mode - Gateway, Repeater, WDS.

AIR-M750

750Mbps, Dual Band 11ac High Power Ceiling AP



- 600mW, High Power 750Mbps Access Point. • 4 dbi MIMO Antenna.
- WPA/WPA2 encryptions for defence against security threats.
- Seamlessly compatible with 802.11a/b/g/n devices.
- Support 24V/1A PoE or 48V/1A PoE • Support Multiple SSID.
- Support 802.1Q VLAN.
- Multiple Operation mode - Gateway, Repeater, WDS.

AIR-M1200

1200Mbps WAVE2 11ac High Power Ceiling Mount AP



- 1000mW, High Power 1200Mbps AP.
- 4*5 dbi MIMO Antenna. • WAN /LAN 2*10/100/1000Mbps.
- WPA/WPA2 encryptions for defence against security threats.
- Seamlessly compatible with 802.11a/b/g/n devices.
- Supports 48V/1A PoE. • Support Multiple SSID.
- Support 802.1Q VLAN.
- Multiple Operation mode - Gateway, Repeater, WDS.

XDS6500

2200Mbps WAVE2 11ac Dual Band Access Point



- Support Wave 2 Technology - With Wave 2 Technology, it adopt 256QAM modulation, support MU-MIMO (Multi-User Multiple-Input Multiple-Output), 160MHz Frequency, greatly to improve the communication efficiency.
- PoE 802.3at • Multiple SSID & Tag VLAN.
- 1WAN Gigabit, 1LAN Gigabit • Centrally Managed through Controller.
- Built in Smart Channel Analysis Tool, help to select the less Wi-Fi Interference channels, ensure stable wireless signal.
- Multiple Operation mode - Gateway, Repeater, WDS.

Enterprise Chipset for Enterprise Application

Adopt to Enterprise level Qualcomm Chipset, more professional in enterprise application such as wireless coverage in hotel, school, hospital, dormitory.



WAP100

Wall Access Point



- Compliant with IEEE 802.11b/g/n standard.
- Support 802.1Q tag VLAN.
- Multiple SSID upto 4.
- 1 x 10/100Mbps LAN/WAN Port.
- Support IEEE802.3 af PoE.

WAP100E

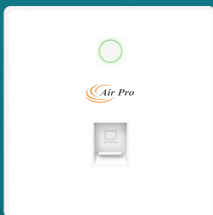
2.4GHz 300Mbps Wall AP with 1LAN 10/100Mbps



- 1x10/100 Mbps LAN Port.
- MIMO 3dbi built-in omni directional antenna.
- Support 802.3af PoE.
- Dimensions (W*D*H) 86*86*68mm.

WAP2750E

750Mbps Dual Band 11n ac Wall AP with 1LAN 10/100Mbps



- Compatible with 802.11ac wireless technology, work with 802.11a/b/g/n device.
- Simultaneous Dual-Band with speeds up to 733Mbps at 2.4GHz and 5GHz band concurrently.
- 8M Flash + 64M DDRII RAM, more stable performance in wireless.
- Easy setup, remote and central managed by access controller system and Cloud management system.

WAP2750EU

750Mbps Dual Band 11ac Wall AP with 1 LAN & 1 USB



- Compatible with 802.11ac wireless technology, work with 802.11a/b/g/n device.
- Simultaneous Dual-Band with speeds up to 733Mbps at 2.4GHz and 5GHz band concurrently.
- 8M Flash + 64M DDRII RAM, more stable performance in wireless.
- 1 LAN & 1 USB Port.

WAP1200

1200Mbps Dual Band 11ac/b/g/n Wall AP with 2 LAN & 1 RJ11



- 1200Mbps Dual Band Wall Mount Wireless AP.
- AC dual band wall mount Wireless Access Point with Gigabit WAN port.
- 2 Gigabit LAN Port +1 RJ11 Port.
- AP has integrated IEEE 802.3af standard Power over Ethernet.
- Built-in Smart Channel Analysis Tool, help to select the less Wi-Fi Interference channels, ensure stable wireless signal.

In-wall Design, Embed into existing decoration,
PoE Support, easy in installation.



WAP1100

2.4GHz 300Mbps Wall AP with 1LAN 1RJ11



- Compliant with IEEE 802.11b/g/n standard.
- Support IEEE802.3af PoE.
- 1*10/100 Mbps LAN Port & 1RJ11 to connect PSTN.
- Support Multiple SSID upto 4 & 802.1Q VLAN per SSID.

WAP3100

2.4GHz 300Mbps Wall AP with 2LAN 10/100Mbps & 1RJ11



- 2*10/100Mbps LAN Port and 1*RJ11 Port.
- 2*3dbi MIMO Omni directional antenna.
- Support 802.3af PoE.
- Chipset -Qualcomm QCA9531.

AP-WLC1500

**AP-WLC1500,
Wireless LAN Controller**



- RTL8198 Chipset, 128M flash, 512M DDR2.
- 1*10/100/1000M Gigabit WAN Port, 4*10/100/1000M Gigabit LAN Ports.
- Auto detect and assign IP for wireless AP, manage and control AP, max 150 wireless AP can be managed.
- Support Web management and Web remote Management.
- Support IP port filtering, MAC filtering, URL filtering, Port forwarding, DMZ security method.
- Support PPPoE, Static IP, Dynamic IP and PPTP.
- Support Tag VLAN, QoS, Real Time Monitor and Analyze.

AP-WLC2000

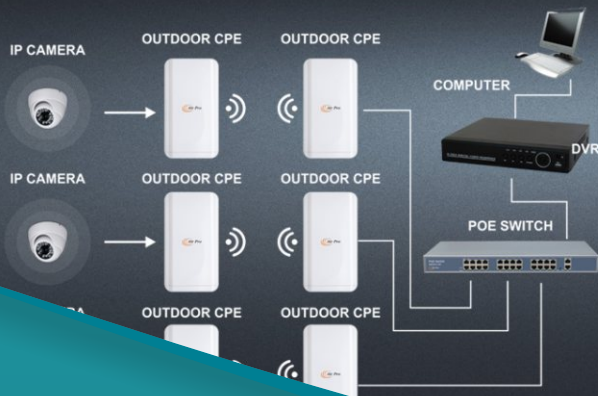
**AP-WLC2000,
Wireless LAN Controller**



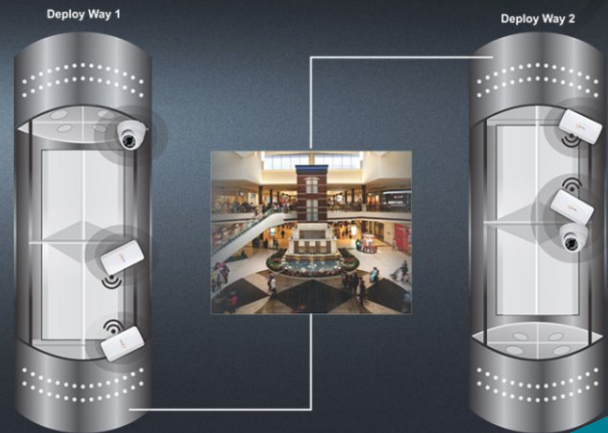
- RTL8198 Chipset, 128M flash, 512M DDR2.
- 1*10/100/1000M Gigabit WAN Port, 4*10/100/1000M Gigabit LAN Ports.
- Auto detect and assign IP for wireless AP, manage and control AP, max 200 wireless AP can be managed.
- Support Web management and Web remote Management.
- Support IP port filtering, MAC filtering, URL filtering, Port forwarding, DMZ security method.
- Support PPPoE, Static IP, Dynamic IP and PPTP.
- Support Tag VLAN, QoS, Real Time Monitor and Analyze.

AIR CONNECT-2, 300MBPS OUTDOOR CPE

PTMP WORKING DIAGRAM OF OUTDOOR CPE WORK WITH IP CAMERA



PTP WORKING DIAGRAM OF OUTDOOR CPE WORK IN ELEVATOR



AIR-DRONA

Air Drona 2.4Ghz-1000mW High Power AP/CPE



- 150Mbps Wireless Outdoor AP/CPE with 2-LAN 10/100 Ports with 24V/1A PoE.
- AP/Repeater/WISP/Router.
- 12dbi Directional Antenna.
- Managed through controller.

AIR-LAKSHYA

Air Lakshya 2.4Ghz-800mW High Power AP/CPE



- 300Mbps Wireless Outdoor AP/CPE with 2-LAN 10/100 Ports with 24V/1A PoE.
- AP/Repeater/Router.
- 14dbi MIMO Directional Antenna.
- Managed through controller.

AIR-CONNECT-2

300Mbps Outdoor CPE



- 300Mbps Wireless AP, Gateway, WISP, Wireless Bridge, WDS.
- 1*10/100Mbps LAN Port, support 24V PoE.
- 1*WDS Switch Button to do WDS Connection.
- 1*DC Injector, 12V/1A.
- 1*Reset Button.

AIR-BRIDGE

Air Bridge 5Ghz-800mW High Power AP/CPE



- 450Mbps Wireless Outdoor AP/CPE with 2-LAN 10/100 Ports with 24V/1A PoE.
- AP/Repeater/WISP/Router.
- 12dbi Directional Antenna.
- Managed through controller.

AIR-DHRUV-5

Air Dhruv 5 - 5GHz 900Mbps High Power AP



- Comply with IEEE 802.11ac/a/n, 5G,900Mbps Data.
- 1*10/100/1000Mbps WAN Port.
- 1*10/100/1000Mbps LAN Port.
- 500mW high power, built in 18dBi MIMO panel antenna, stronger signal strength, more wireless coverage.
- Support passive PoE, 24V.
- Support SSID broadcasting, Multiple SSID up to 4.

AIR-GARUD2200

2200Mbps Dual Band High Power AP



- Chipset Qualcomm IPQ4019+QCA9886+QCA8075.
- Standard 802.11ac/b/g/n,MU-MIMO technology.
- Memory 512MB DDR3 RAM, Flash 32MB.
- Interface 1* 10/100 /1000Mbps RJ45 WAN Port.
- 1* 10/100 / 1000Mbps RJ45 LAN Port (Inside of shell).
- 1* Reset button, press 10 seconds to revert to default setting.
- Antenna 6* N type connector.
- Power consumption 48V PoE<30W.
- Size 183mm*183mm*43mm, IP66 comply.



Professional Outdoor Design for Safety Application

Weatherproof house together with Lightning and ESD protection, to guarantee the outdoor application safety



AIR-NAMO

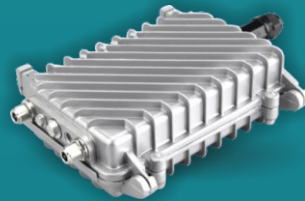
Air Namu-2, 2.4Ghz-500mW AP



- 300Mbps Wireless Outdoor AP with 2-LAN 10/100 Ports with 24V/1A PoE.
- AP/Repeater/Router, VLAN802.1Q, Managed through controller.
- 2*7dbi MIMO Antenna.
- 256 RAM/16MB Flash.
- Managed through controller.

AIR-SETU-2

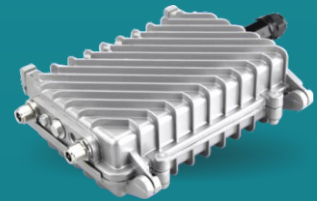
2.4Ghz High Power AP/CPE



- 300Mbps Wireless Outdoor AP/CPE with 2-LAN 10/100 Ports with 24V/1A PoE.
- AP/Repeater/Router.
- External Antenna.
- Managed through controller.

AIR-SETU-5

5Ghz High Power AP/CPE



- 300Mbps Wireless Outdoor AP/CPE with 2-LAN 10/100 Ports with 24V/1A PoE.
- AP/Repeater/Router.
- External Antenna.
- Managed through controller.

AIR-MO750

11AC 750Mbps High Power Outdoor Wireless AP



- 750Mbps Data Rate.
- 1*10/100Mbps WAN Port, 1*10/100Mbps LAN Port.
- 500mW high Power, Qualcomm Chipset, 16M Flash.
- 128M DDR2 RAM.
- Support Standard 48V PoE.
- Managed through controller.
- 3*7dbi Mimo omni antenna.
- User support more than 100.

AIR-MO1200

11AC 1200Mbps High Power Outdoor Wireless AP

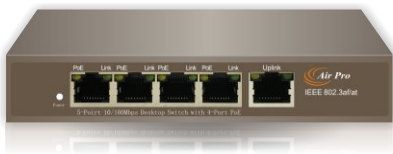


- 1200Mbps Data Rate.
- 1*10/100/1000Mbps WAN Port, 1*10/100/1000Mbps LAN Port.
- 1000mW high Power, Qualcomm Chipset, 16M Flash.
- 128M DDR2 RAM.
- Support 48V PoE, with 48V/1A PoE Adapter.
- Managed through controller.
- 3*7dbi Mimo omni antenna.
- User support more than 100.



AP1205

5-Port 10/100Mbps Rackmount Long Range (250mtr) PoE Switch with 4-Port PoE



- With 4 PoE ports, transfers data and power on one single cable.
- Working with IEEE 802.3af/at compliant PDs, expands home and office network.
- Internal Power Supply : 65W.
- Long Range PoE support upto 250mtrs.

AP1208

10-Port 10/100Mbps Long Range (250mtr) PoE Switch with 8-Port PoE



- With 8 PoE ports, transfers data and power on one single cable.
- Working with IEEE 802.3af/at compliant PDs, expands home and office network.
- Internal Power supply : 150W.

AP1208-2GE

8 PoE Port with 2 Gigabit Uplink



- With 8 PoE ports with 2 Giga uplink, transfers data and power on one single cable.
- Working with IEEE 802.3af/at compliant PDs, expands home and office network.
- Internal Power supply : 150W.

AP1216

16Port 10/100 Rack Mount +2GE Uplink PoE Switch



- 16FE+2GE 1 SFP uplink Ports switch with 16 PoE.
- Supports power up to 30W for each port.
- Supports 802.3af/at PoE compliant PD.
- Internal power adapter supply 300W.

AP1224

24Port 10/100 +2 Combo Gigabit Uplink PoE Switch



- 24FE+2 Combo Gigabit Ports switch with 24 PoE.
- Supports power up to 30W for each port.
- Supports 802.3af/at PoE compliant PD.
- Internal power adapter supply 400W.

100/1000Mbps Gigabit Rack Mount PoE Switch with SFP Uplink



AP-ESG1905P

5-Port Gigabit Desktop Switch with 4 Port PoE



- 5 Port 10/100/1000mbps Desktop switch with 4 Port PoE.
- Working with IEEE 802.3af/at compliant PDs, expands home and office network.
- Power Supply : 72W.
- Steel housing, desktop or wall-mounting design.

AP-ESG1910P

8GE+2SFP Gigabit Fiber 48V PoE Switch



- 8GE+2SFP Fiber Ports PoE switch with 8 PoE.
- Supports power up to 30W for each port.
- Supports 802.3af/at PoE compliant PD.
- Internal power adapter supply 150W.

AP-ESG1910P-2GE

8GE+2GE Rackmount Switch with 8 Port PoE Switch



- 8GE+2GE Rackmount switch with 8 Port PoE Switch.
- Supports power up to 30W for each port.
- Supports 802.3af/at PoE compliant PD.
- Internal power adapter supply 150W.

AP-ESG1918P

16GE+2 Combo Gigabit Uplink 48V PoE Switch



- 16GE+2 Combo Ports PoE switch with 16 PoE.
- Supports power up to 30W for each port.
- Supports 802.3af/at PoE compliant PD.
- Internal power adapter supply 180W (Optional 300w/35w&400w)

AP-ESG1926P

24GE+4 Combo Gigabit Uplink 48V PoE Switch

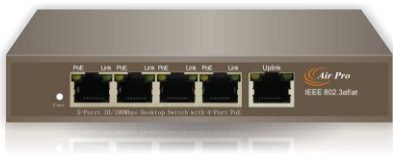


- 24GE+4 Combo Ports PoE switch with 24 PoE.
- Supports power up to 30W for each port.
- Supports 802.3af/at PoE compliant PD.
- Internal power supply 250W (Optional 300w/350w/400w/500w)



AP-ES1404

4port 10/100Mbps PoE with 2Uplink



- Support 24V passive PoE.
- PoE Pin 4/5(+), 7/8(-).
- Internal Power Supply.

AP-ES1408

8port 10/100Mbps PoE with 2Uplink Port



- Working on IEEE 24V passive PoE compliant PDs, expands home and office network.
- Requires no configuration and installation.
- Internal power supply.
- PoE Pin 4/5(+), 7/8(-).

AP-ES1416

16Port 10/100 PoE with 2GE Uplink + 1SFP



- With 16 PoE ports, transfers data and power on one single.
- Working with IEEE24V passive PoE compliant Pds, expands home and office network.
- Internal power supply.
- Power Supply : 300W.

AP-ES1424

24Port 10/100 PoE with 2GE + 1 SFP Uplink



- 24, 10/100Mbps RJ45 Ports PoE Switch.
- With 24 PoE ports, transfers data and power on one single cable.
- Working with 24V passive PoE compliant PDs, expands home and office network.
- Requires no configuration and installation.
- Internal power supply.

AP-ESG8210R

8GE+2SFP Gigabit Ports Management Reverse PoE Switch



- Port1-7 for PoE In, Port 8 for PoE Out.
- PoE Output 24V 1A, PoE PIN 4,5+ 7,8-
- Support 24V Passive PoE compliant PSE and PD.
- Support QVLAN ,QoS, RSTP Function.



Reliable PoE

for Wireless & Security Surveillance Solution



AP-ESG3010P

8G+2SFP Gigabit Management 48V PoE Switch



- 8GE+2SFP Gigabit Management Switch with 8 PoE Ports.
- Supports power up to 30W for each port.
- Supports 802.3af/at PoE compliant PD.
- Support QVLAN ,QoS, RSTP Function.

AP-ESG3018P

16G+2SFP Gigabit Management 48V PoE Switch



- 16G+2SFP Gigabit Management Switch with 16 PoE Ports.
- Supports power up to 30W for each port.
- Supports 802.3af/at PoE compliant PD.
- Support QVLAN ,QoS, RSTP Function.

AP-ESG3026P

24G+4 Combo Gigabit Uplink Management 48V PoE Switch



- 24G+4 Combo Gigabit Uplink Management Switch with 24 PoE Ports.
- Supports power up to 30W for each port.
- Supports 802.3af/at PoE compliant PD.
- Support QVLAN ,QoS, RSTP Function.

AP-ES2108R

8Ports 100M 24V Reverse PoE Switch



- Port1-7 for PoE In, Port8 for PoE Out.
- PoE Output 24V 1A, DC output 5V/12V.
- Support 24V Passive PoE compliant PSD and PD.
- Support Port VLAN.

AP-ESG2110R

8GE+2SFP Gigabit Fiber Ports Reverse PoE Switch



- Port1-7 for PoE In, Port 8 for PoE Out.
- PoE Output 24V 1A, PoE PIN 4,5+ 7,8-
- Support 24V Passive PoE compliant PSD and PD.
- Support Port VLAN.

AP-ESG2116R

16-Port 10/100Mbps Reverse PoE Switch with 15-Port PoE



- 16Ports 10/100Mbps RJ45 Ports.
- PoE Output 24V 1A, PoE PIN 4,5+ 7,8-
- Support 24V Passive PoE compliant PSD and PD.
- Support Port VLAN.



AP-ING5505

4-port 10/100/1000Mbps PoE + 2-port 1000Mbps SFP Slot



- 4 Port 10/100/1000Mbps POE with Auto Uplink™, 2 port 1000Mbps SFP.
- 4 Port support PoE, supports IEEE.
- 802.3af(15.4W),IEEE802.3at PoE (30W).
- Automatic MAC address learning and aging.
- Automatically support IGMP (Multicasting).
- 10/100/1000Mbps Auto-negotiation, auto-MDI-MDI-X.
- LED indicators for monitoring power/link/activity.
- Supports 10/100/1000Mbps-Full/Half-duplex.
- Supports DIN-Rail installation.

AP-ING8012P

Managed Full Gigabit 8 POE+4SFP+2RJ45 Uplink, AT Type



- 10-Port 10/100/1000Base-T + 4 (100/1000M) SFP L2 Plus Managed POE+ Switch.
- L2+ features provide better manage ability, security, QoS, and performance.
- Support spanning tree STP (802.ID) and RSTP (802.1W).
- Jumbo frames support up to 9.6K kilobytes.
- Support cable diagnosis.
- Supports both IEEE 802.3af and 802.3at, and every port PoE configuration function.

AP-ESG3010

8 Port 10/100/1000Mbps L2 Managed Ethernet Switch



- Complies with IEEE802.3, IEEE 802.3u, IEEE 802.3ab standards.
- 8 x 10/100/1000Mbps Auto-Negotiation RJ45 ports supporting Auto-MDI/MDIX.
- Support the Console port management.
- 8K entry MAC.
- Supports WEB management interface.
- LED indicators for monitoring power, link, activity and speed.
- Internal power adapter supply.

AP-ESG3018

16 Port Gigabit + 2SFP Slots L2 Managed Ethernet Switch



- 16GE+2SFP Full Gigabit Switch.
- VLAN support to easily segment IP traffic.
- Management via Web-Based GUI / Telnet.
- Up to 4K VLANs simultaneously.
- Support for Quality of Service to prioritize time sensitive traffic.
- Support IGMP Snooping, Link Aggregation, Port Mirroring and Loop Prevention.

AP-ESG3026

24 Port Gigabit + 2SFP Slots L2 Managed Ethernet Switch



- 24GE+2SFP Full Gigabit Switch.
- VLAN support to easily segment IP Camera security traffic.
- Management via Web-Based GUI / Telnet.
- Up to 4K VLANs simultaneously.
- Support for Quality of Service to prioritize time sensitive traffic.
- Support IGMP Snooping, Link Aggregation, Port Mirroring and Loop Prevention.



AP-4100

Indoor 4G LTE Failover 11N Wireless Router



- 3G/4G LTE SIM embedded.
- Dual WAN ports- 3G/4G LTE and FE Ethernet WAN (EWAN) for broadband Failover backup connectivity.
- 1* FE WAN and 3* FE LAN.
- IPv6 ready.
- Wireless 802.11b/g/n 300mbps.
- Support AirPro CMS.

AP-LT4505N (VPN)

Indoor 4G LTE Failover 11N Wireless VPN Router



- 3G/4G LTE SIM embedded.
- Dual WAN ports- 3G/4G LTE and Gigabit Ethernet WAN (EWAN) for broadband Failover backup connectivity.
- 1* Gigabit WAN and 4* Gigabit LAN.
- Embedded IPSec, PPTP and L2TP VPN endpoint/server with powerful encryption & GRE.
- IPv6 ready.
- Wireless 802.11b/g/n 300mbps.
- Support AirPro CMS.

AP-LT4525AN

Indoor 4G LTE Router 11N Wireless Router



- 3G/4G LTE SIM embedded.
- Dual WAN ports- 3G/4G LTE and Gigabit Ethernet WAN(EWAN) for broadband Failover backup connectivity.
- 1* Gigabit WAN and 4* Gigabit LAN.
- Embedded IPSec, PPTP and L2TP VPN endpoint/server with powerful encryption & GRE.
- IPv6 ready.
- 1*USB port for storage / NAS – SAMBA server.
- Wireless 802.11b/g/n 300mbps.
- Support AirPro CMS.

AP-LT100

Advanced Industrial 4G/LTE Router



- Offers 4G/LTE and/or Ethernet IP broadband connectivity (3G fallback is optional).
- Automatic failover for network resilience and reliable connectivity.
- Embedded GPS option for real-time asset tracking and location data-based application.
- Local and Remote management via Web GUI, SNMP or CWMP(TR-069).
- Dual-WAN Interfaces.
- Auto fail-over and fallback.
- Supports DHCP server/client/relay.
- Supports port-based Virtual LAN (VLAN).

AP-3310

3G/LTE Outdoor CPE



- 3G/LTE outdoor in challenging rugged environment.
- L2TP, PPTP, IPSec, EoIP.
- Advanced Antenna 10dBi.
- Multiple LTE Bands.
- PoE.
- SNMP, TR069.
- 2 Sim Card Slot.





AP-5700EUW

Outdoor 4G LTE Failover 11AC Wireless (VPN) Router

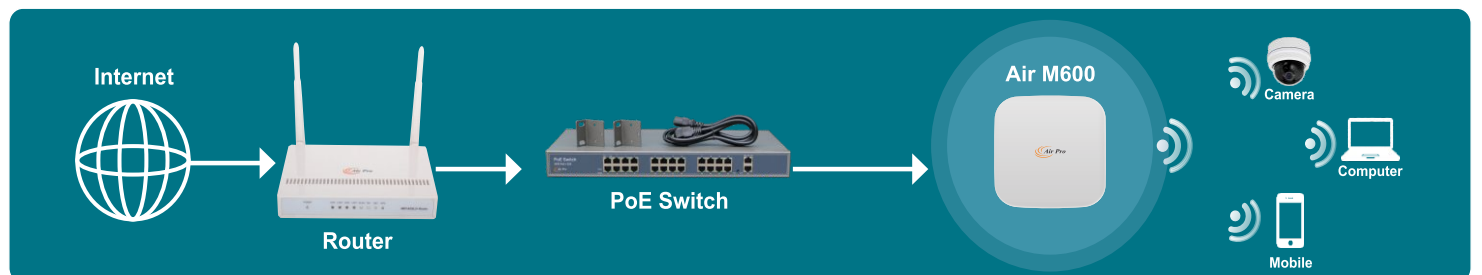


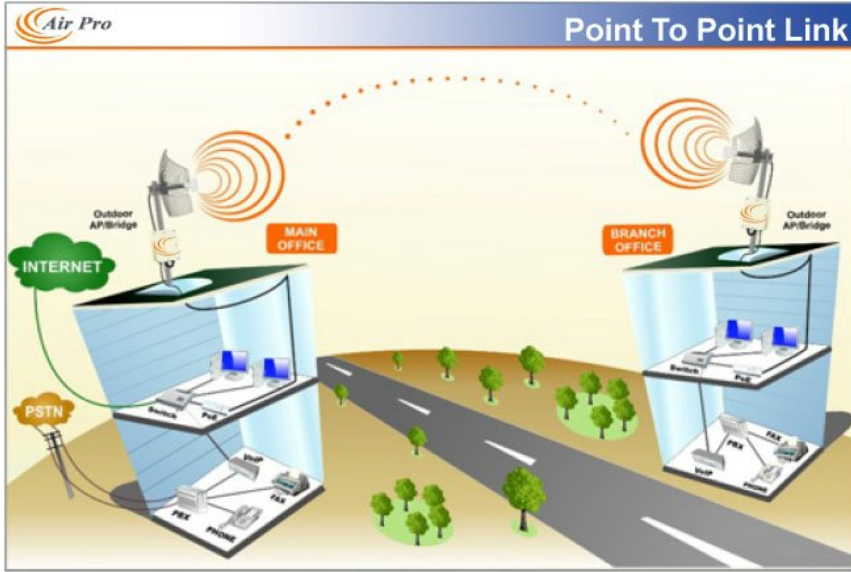
- 4G LTE SIM Embedded.
- 1*Gigabit LAN and 1*Gigabit WAN.
- Wireless 802.11b/g/n 300Mbps-2.4GHZ.
- MIMO antenna for maximum bandwidth and service coverage Embedded directional & Optimize antenna design per band.
- Lightweight and compact design.
- Easily installed by single person.
- Supports power over Ethernet (PoE).
- RF design technology.
- Designed for challenging /rugged deployments.
- Operating temperature -40C to 60C (-40F to 140F).

Which is the best Indoor High Power Ceiling AP/Router/Repeater for you ?

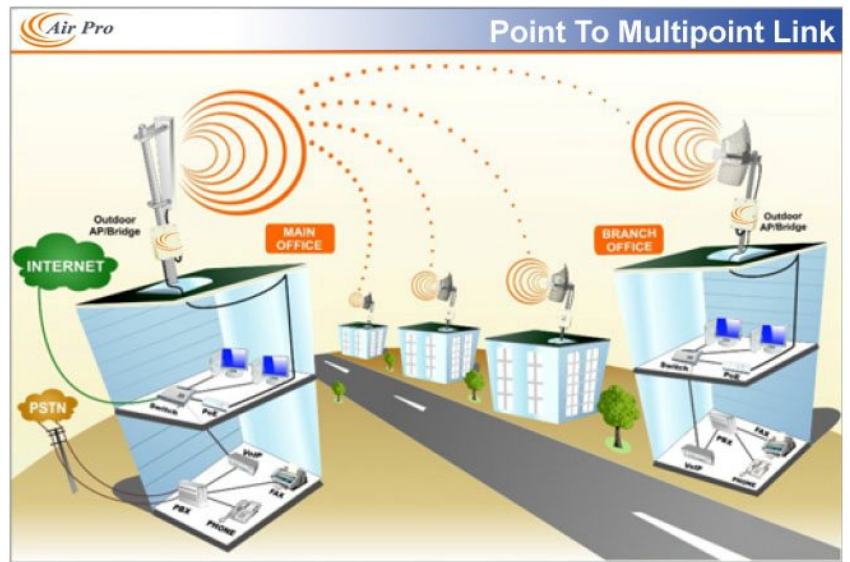
	Model No. XDS9500S	Model No. Air M600	Model No. Air M750	Model No. Air M1200
Wireless Speed	300Mbps	600Mbps	750Mbps	1200Mbps
Antennas	2*5dbi OMNI	3*5dbi OMNI	4dbi OMNI	4*5dbi OMNI
Wireless coverage	Excellent	Excellent	Excellent	Excellent
Memory	64MB DDR RAM	128 MB DDR RAM	128MB DDR RAM	128MB DDR RAM
Interface	<ul style="list-style-type: none"> • 2xRJ45 for 10/100 Mbps WAN/LAN Port (Support 12V/24V POE) • 1 x Reset button • 1 x Power DC Jack 	<ul style="list-style-type: none"> • 2xRJ45 for 10/100 Mbps WAN/LAN Port (Support 12V/24V POE) • 1 x Reset button • 1 x Power DC Jack 	<ul style="list-style-type: none"> • 2xRJ45 for 10/100 Mbps WAN/LAN Port (Support 12V/24V POE) • 1 x Reset button • 1 x Power DC Jack 	<ul style="list-style-type: none"> • 2xRJ45 for 10/100/1000 Mbps WAN/LAN Port (Support 12V/24V POE) • 1 x Reset button • 1 x Power DC Jack
Flash	16MB	16MB	16MB	16MB
Support	up to 30 users	up to 60 users	up to 60 users	up to 100 users
Size	16.8*4.5CM	18.8*4.5CM	18.8*4.5CM	18.8*4.5CM
Operation Mode	Wireless AP, Client	Wireless AP, Client	Wireless AP, Client	Wireless AP, Client
System Setting	Web-based config. (HTTP/Telnet)	Web-based config. (HTTP/Telnet)	Web-based config. (HTTP/Telnet)	Web-based config. (HTTP/Telnet)
Security	<ul style="list-style-type: none"> • WEP Encrypt.-64/128/152 bit • WPA/WPA2 Personal • WPA/WPA2 Enterprise • Hide SSID 	<ul style="list-style-type: none"> • WEP Encrypt.-64/128/152 bit • WPA/WPA2 Personal • WPA/WPA2 Enterprise • Hide SSID 	<ul style="list-style-type: none"> • WEP Encrypt.-64/128/152 bit • WPA/WPA2 Personal • WPA/WPA2 Enterprise • Hide SSID 	<ul style="list-style-type: none"> • WEP Encrypt.-64/128/152 bit • WPA/WPA2 Personal • WPA/WPA2 Enterprise • Hide SSID
	XDS9500S  300 Mbps Ceiling Mount AP	Air M600  600 Mbps Ceiling Mount AP	Air M750  750 Mbps Ceiling Mount AP	Air M1200  1200 Mbps Ceiling Mount AP

Configuration and Internet Settings





Point to Point Link



Point to Multipoint Link



Hotspot (Wi-Fi)



AIRPRO TECHNOLOGY INDIA PVT. LTD.

HQ :- #80, Forest Manor Road, North York, Toronto, Canada, M2J1M6
Tel :+1-614 915 0486

INDIA OFFICE :-

A-105, 1st Floor, Shubh Innov 8, Building No.
A-1, Chinchpada, Gokhiware, Vasai East, Mumbai
e-mail : sales@airpro.in, www.airpro.in