

ES
2116R

16-Port 10/100Mbps Reverse PoE Switch with 15-Port PoE In ES2116R

- With 15 reverse in coming PoE ports, the 16th port is PoE output
- Working with 24V passive PoE compliant PSE, expands FTTX network
- Requires no configuration and installation
- Output power supply 24v via Uplink port or DC port



OVERVIEW

ES2116R is an 16 10/100Mbps ports unmanaged reverse poe switch that requires no configuration and provides 15 incoming PoE (Power over Ethernet) ports. It can automatically detect and accept power with all 24V Passive PoE compliant Powered Supply Equipment (PSE).

In this situation, the electrical power is transmitted along with data in one single cable allowing you to expand your network to where there are no power lines or outlets, this product suit for your FTTX solution and solve the power supply of your ONU equipment in your building corridor.

KEY FEATURES

- With 15 reverse in coming PoE ports, the 16th port is PoE output
- Working with 24V passive PoE compliant PSE, expands FTTX network
- Requires no configuration and installation
- Output power supply 24v via Uplink port or DC port

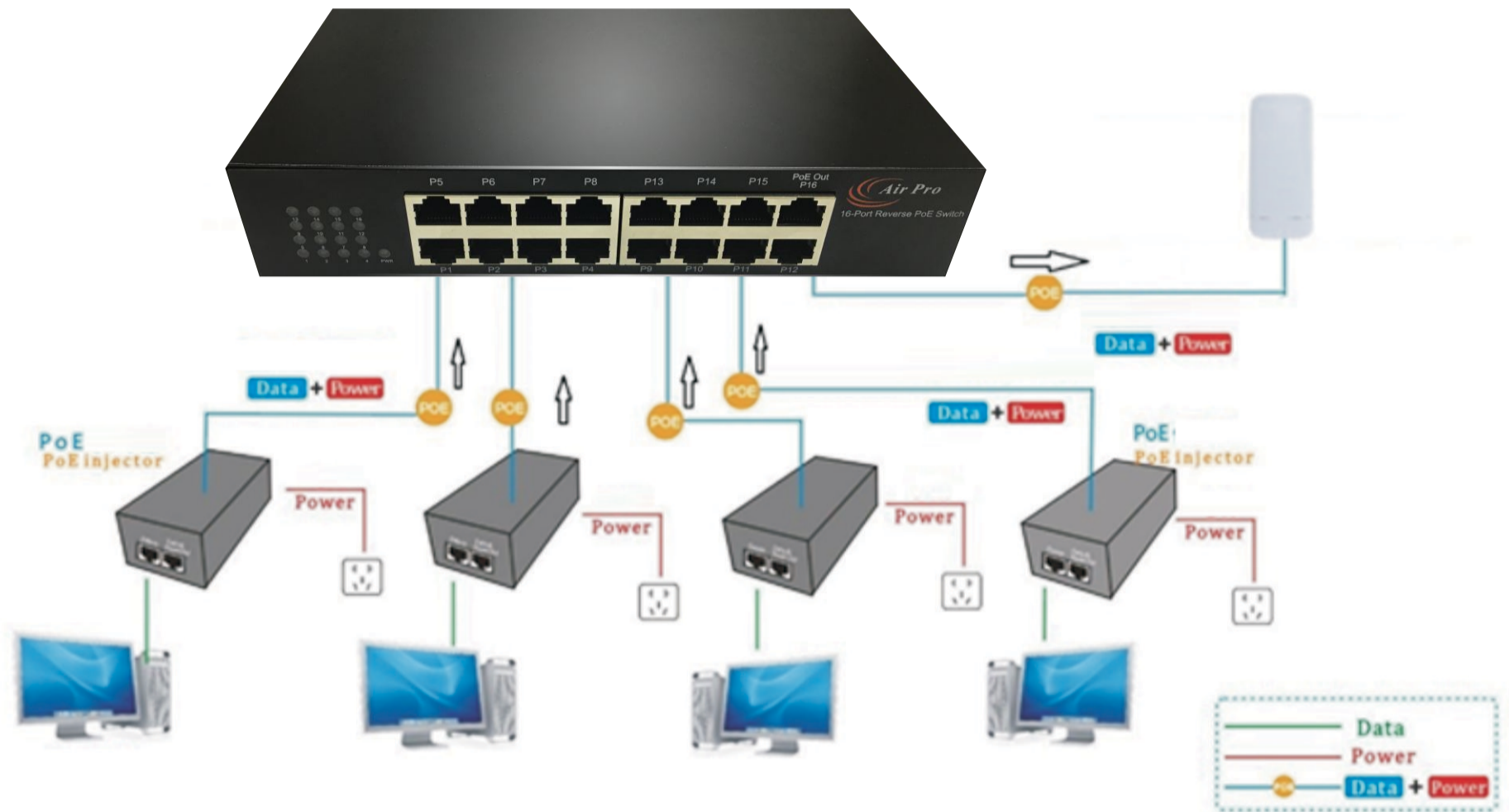
TECHNICAL SPECIFICATIONS

Hardware	
Data interface	16Ports 10/100Mbps RJ45 Ports AUTO Negotiation/AUTO MDI/MDIX
Network Media	10BASE-T: UTP category 3, 4, 5 cable (maximum 100m) EIA/TIA-568 100Ω STP (maximum 100m) 100BASE-TX: UTP category 5, 5e cable (maximum 100m) EIA/TIA-568 100Ω STP (maximum 100m)
PoE Ports (RJ45)	PoE in Ports: Port 1 - Port 15 PoE out Port: Port 16
PoE Pin Definition	4/5 (+), 7/8 (-)
Back Plan Bandwidth	3.2Gbps
Power Supply Output	DC 24V
Fan Quantity	Fanless
Dimensions (L x W x H)	195mm x 113mm x 28mm

Software	
Transfer Method	Store and Forward
MAC Address Table	4K
Advanced Functions	Compatible With 24 passive PoE Compliant PSE Priority Function Mac Address Auto-Learning And Auto-Aging IEEE802.3x Flow Control For Full-Duplex Mode And Backpressure For Half-Duplex Mode

Others	
Certification	CE
Environment	Operating Temperature: 0°C~40°C (32°F~104°F) Storage Temperature: -40°C~70°C (-40°F~158°F) Operating Humidity: 10%~90% non-condensing Storage Humidity: 5%~90% non-condensing
Package	16-Port 10/100Mbps Reverse PoE Switch with 15 Port PoE In
System Requirements	Microsoft® Windows 8, Windows 7,98SE, NT, 2000, XP, Vista™, MAC® OS, NetWare®, UNIX® or Linux.

16-Port 10/100Mbps Reverse PoE Switch with 15-Port PoE In ES2116R



www.airpro.in