



AP
ESG3012P

8-port GbE L2 managed Switch + 4 Combo GbE Ports w/ 8 PoE+ ports

- Support 8*RJ45 ports + 4*RJ45/SFP ports
- Support 8 PoE ports, follow IEEE802.3at and IEEE802.3af
- Support Web UI for configuration



OVERVIEW

- Support 8*RJ45 ports + 4*RJ45/SFP ports.
- Support 8 PoE ports, follow IEEE802.3at and IEEE802.3af.
- Support Web UI for configuration.

HARDWARE SPECIFICATIONS

ITEMS	SPECIFICATIONS
Model No.	AP-ESG3012P
Key Components	1. RTL8382M+RTL8214FC 2. IC+ IP808 PSE controller
I/O ports	8 x GbE ports, RJ45 4 x GbE combo ports, RJ45 + SFP Reset Button: reset to default setting, re-start system
PoE ports	Port# 1~ 8 IEEE802.3at, IEEE802.3af
LED Define	<p>SYS: Green LED</p> <ul style="list-style-type: none"> - Off: power off or fail - On: power on - Blinking: system booting up <p>PoE Alert: Green LED</p> <ul style="list-style-type: none"> - Off: No over PoE Max power budget (140W) - On: Over PoE Max power budget (140W) <p>Port LED:</p> <p>Link/ACT:</p> <ul style="list-style-type: none"> - Off: port disconnected or link fail - Green on: 1000Mbps connected - Amber on: 10/100Mbps connected - Blinking: sending or receiving data <p>PoE:</p> <ul style="list-style-type: none"> - Off: PoE power output off - Green on: PoE power output on <p>4 Combo port LED:</p> <p>RJ45:</p> <ul style="list-style-type: none"> - Off: disconnected or fail - Green: 1000Mbps connected - Amber: 10/100Mbps connected - Blinking: data transmitting <p>SFP:</p> <ul style="list-style-type: none"> - Off: disconnected or fail - Green: 1000Mbps connected - Amber: 100Mbps connected - Blinking: data transmitting
HW feature	IEEE802.3 10BASE-T IEEE802.3u 100BASE-TX IEEE802.3ab 1000BASE-T IEEE802.3az EEE IEEE802.3at, IEEE802.3af MAC address Table: 8K Packet buffer size: 4.1M Jumbo Frame: 9K bytes

Cont...

ITEMS	SPECIFICATIONS																								
PoE power pin-out	Alternative A (Pin 1,2/3,6)																								
PoE Output power capacity	<p>Maximum output: 30W per each port</p> <ol style="list-style-type: none"> 1. Compliant with IEEE802.3af/at standard, Following IEEE802.3at/at to support PoE or PoE+ 2. Automatically discover the connection of PD device and immediately sends power to it 3. Auto disable port if the port current is over 700mA or short happens 4. Priority default setting is lower port NO. has high priority 5. The maximum power used by power devices is defined by the following classification. When Port works in Auto Mode, the output port power limit will be associated with PD classification Value. <table border="1"> <thead> <tr> <th>Class</th> <th>Usage</th> <th>Minimum Power Levels Output at the PSE</th> <th>Maximum Power Levels at the Powered Device</th> </tr> </thead> <tbody> <tr> <td>0</td> <td>Default</td> <td>15.4W</td> <td>0.44 to 12.95W</td> </tr> <tr> <td>1</td> <td>Optional</td> <td>4.0W</td> <td>0.44 to 3.84W</td> </tr> <tr> <td>2</td> <td>Optional</td> <td>7.0W</td> <td>3.84 to 6.49W</td> </tr> <tr> <td>3</td> <td>Optional</td> <td>15.4W</td> <td>6.49 to 12.95W</td> </tr> <tr> <td>4</td> <td>Optional</td> <td>30W</td> <td>12.95W to 25.5W</td> </tr> </tbody> </table> <p>6. Follow the standard PSE pin-out standard of Alternative A (MAD-X) which is sending out power over number 1,2,3,6 pins of 8 wires of Ethernet CAT5 UTP cable</p>	Class	Usage	Minimum Power Levels Output at the PSE	Maximum Power Levels at the Powered Device	0	Default	15.4W	0.44 to 12.95W	1	Optional	4.0W	0.44 to 3.84W	2	Optional	7.0W	3.84 to 6.49W	3	Optional	15.4W	6.49 to 12.95W	4	Optional	30W	12.95W to 25.5W
Class	Usage	Minimum Power Levels Output at the PSE	Maximum Power Levels at the Powered Device																						
0	Default	15.4W	0.44 to 12.95W																						
1	Optional	4.0W	0.44 to 3.84W																						
2	Optional	7.0W	3.84 to 6.49W																						
3	Optional	15.4W	6.49 to 12.95W																						
4	Optional	30W	12.95W to 25.5W																						
Power Input	Internal power supply • Input: 90~264VAC/47~63Hz • Output: 12V/1A																								
PoE Power Budget	140W																								
Reset Button	Support reset to default configuration																								
Dimension	265(W) x 183(D) x 44(H) mm																								
FAN Design	Fan-less																								
Temperature	Operating: 0 ~ 40°C • Storage : -40 ~ 70°C																								
Humidity	Operating: 10% ~ 90% RH (non-condensing) • Storage : 5% ~ 90% RH (non-condensing)																								

SOFTWARE SPECIFICATIONS

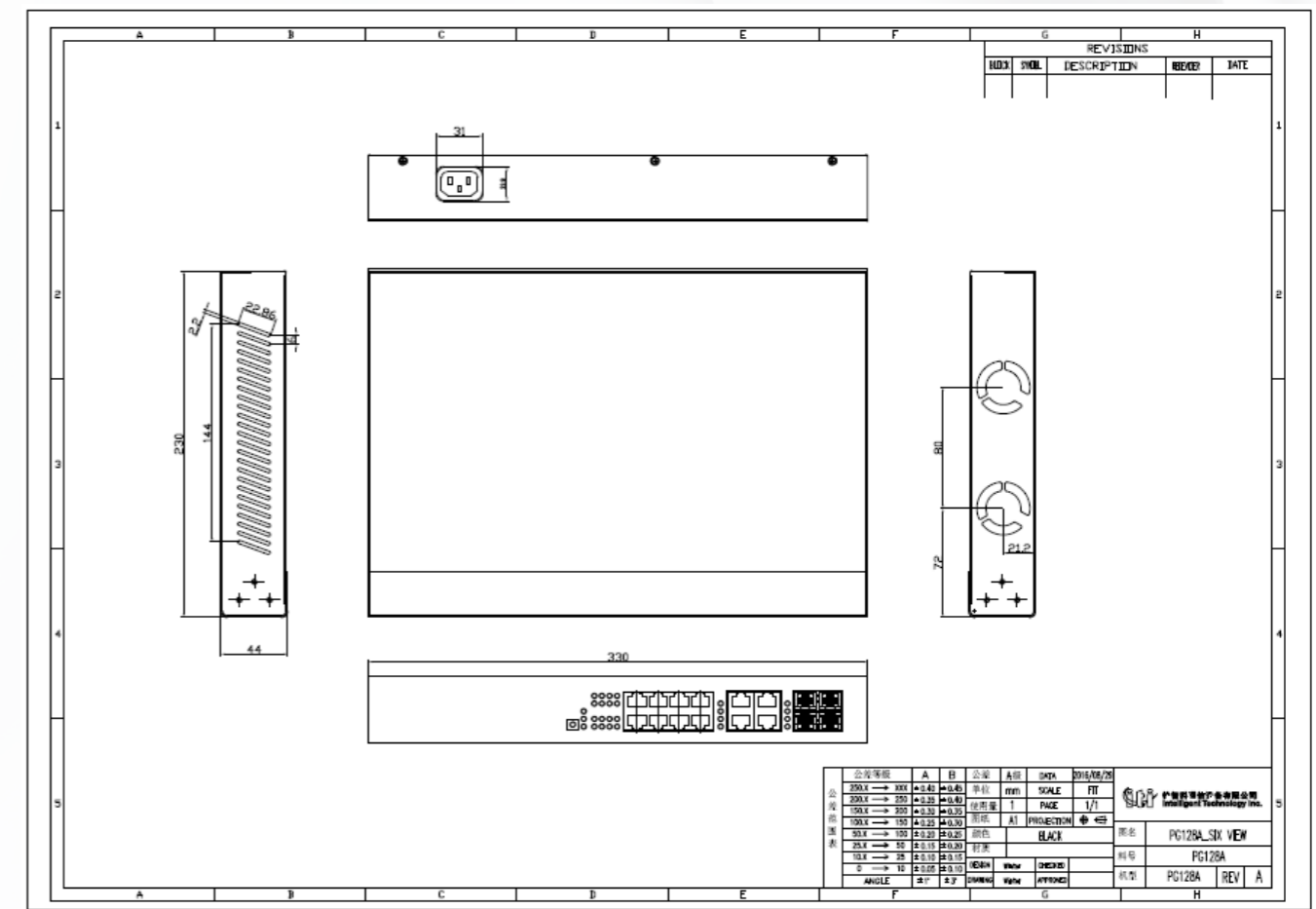
ITEMS	SPECIFICATIONS	L2 SWITCH
Network	DHCP Client DHCPV6 Client SNTP	Yes Yes Yes
Link Aggregation	LACP Link groups LACP Load balance Static Trunk	8 Yes 8
Port	Port Configuration EEE Jumbo Frame	Yes Yes Yes
VLAN	IEEE802.1Q VLAN VLAN Groups Voice VLAN Protocol VLAN MAC VLAN Surveillance VLAN	Yes 256 Yes Yes Yes Yes
Spanning Tree	802.1d (STP) 802.1w (RSTP) 802.1s (MSTP)	Yes Yes Yes
LLDP	LLDP LLDP-MED	Yes Yes

Cont...

SOFTWARE SPECIFICATIONS

ITEMS	SPECIFICATIONS	L2 SWITCH
Multicast	IGMP Snooping v1/v2/v3	Yes
	IGMP Snooping Queries	Yes
	Block unknown multicast traffic	Yes
	Multicast groups	256
	MLD Snooping v1/v2	Yes
Authentication	Multicast VLAN registration (MVR)	Yes
	RADIUS	Yes
	TACACS+	Yes
	Management VLAN	Yes
	Management ACL	Yes
	802.1x	Yes
Security	MAC-Based	Yes
	WEB-Based	Yes
	Guest VLAN	Yes
	Port Security	Yes
	Storm Control	Yes
	DoS	Yes
ACL	Dynamic ARP Inspection	Yes
	DHCP Snooping	Yes
	IP Source Guard	Yes
	MAC ACL	Yes
QoS	IPV4 ACL	Yes
	IPV6 ACL	Yes
	Port-based QoS	No
	IEEE802.1p QoS	Yes
	IP Precedence based CoS	Yes
	DSCP based CoS	Yes
Rate Limiting	Priority Queues	8
	Scheduling Algorithm	SP+WRR
Mirror	Ingress rate limiting	Yes
	Egress rate limiting	Yes
Log	Port Mirroring on ingress and egress	Yes
	Many to One	Yes
Diagnostics	System Log	Yes
	Logging Server	Yes
	Ping	Yes
	Traceroute	Yes
	Cable Test	Yes
Management	Fiber Module Information	Yes
	UDLD	Yes
	User Account	Yes
	WEB UI	Yes
	CLI	Yes
	Telnet	Yes
	Firmware upgrade by WEB UI	Yes
	Firmware upgrade by TFTP	Yes
	Dual Image	Yes
	config upload/download by WEB UI	Yes
SNMP V1/V2/V3	Yes	
SNMP Trap	Yes	
RMON	Yes	
Loop Detection / Prevention	Loop detection	No
	Loop prevention	Yes

MECHANICAL DRAWINGS



EMI / SAFETY

ITEM	Product Description	Remark
Safety	CE, LVD	EN 60950-1
EMC	FCC Part15	
	CE (Class A)	



www.airpro.in

All specifications in this document are subject to change without notice. AirPro products are sold with a limited warranty described at:

www.airpro.in

Copyright 2016, AirPro. All rights reserved.

