

# 900Mbps 11AC Outdoor CPE

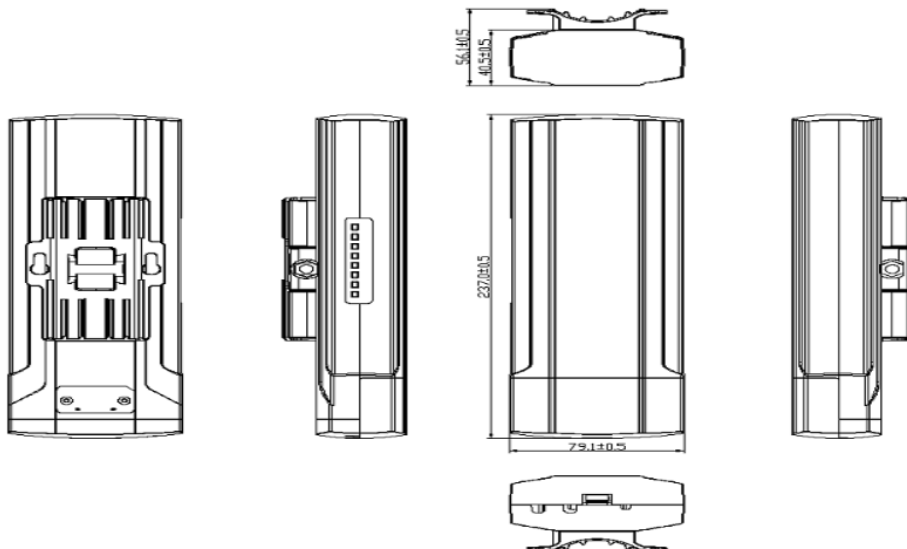
## QUICK OVERVIEW

Air Bridge 5-V2 is a long range high performance 11ac outdoor CPE with 900Mbps data rate. Comply with IEEE 802.11b/g/n/ac standard, 27dBm RF power, 14dBi dual polarized high gain antenna, the PTP/PTMP distance is more than 4000 meters.

It support Wireless AP, Wireless Bridge operation mode for PTP/PTMP connections, with operation switch on device, easy to setup operation mode, no need to access into GUI, avoid the complex setup program, then simple to view the signal strength by LED signal lights, save much human work and cost, make the long range wireless coverage, data transmit and wireless monitoring simple and professional.

Air Bridge5 with ABS waterproof, dustproof and sunscreen shell, temperature adaptive also; Meantime, it support 24V or 48V PoE, ESD protection and surge protection, ideal for outdoor use;

Most Important, Air Bridge5 support watchdog self-detection function, reboot and recover device automatically if some network attack. Besides that, it can be managed through AC controller, administrator can monitor the working status, upgrade firmware, reboot, timed reboot device through cloud server, recover and maintain device at any time and any location, operator level outdoor PTP/PTMP connection equipment.

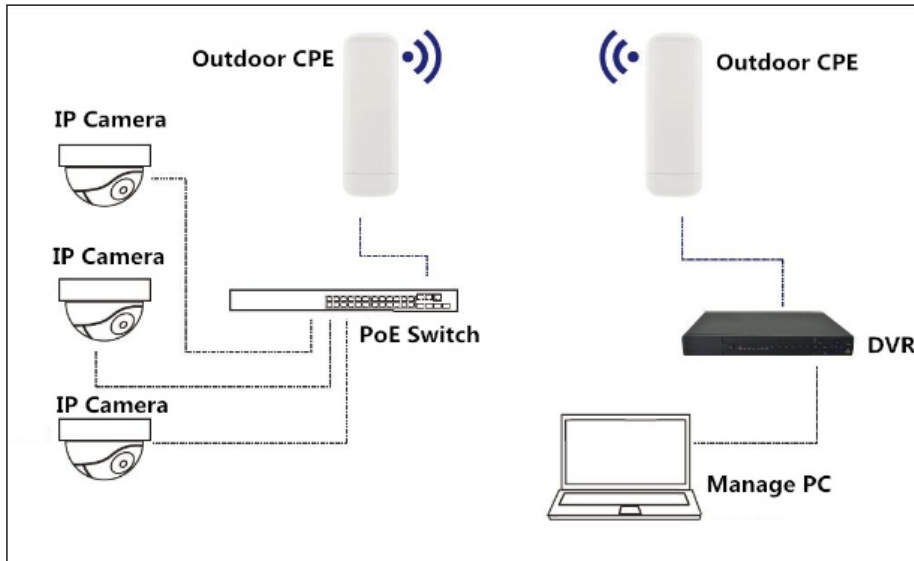


## TECHNICAL SPECIFICATIONS

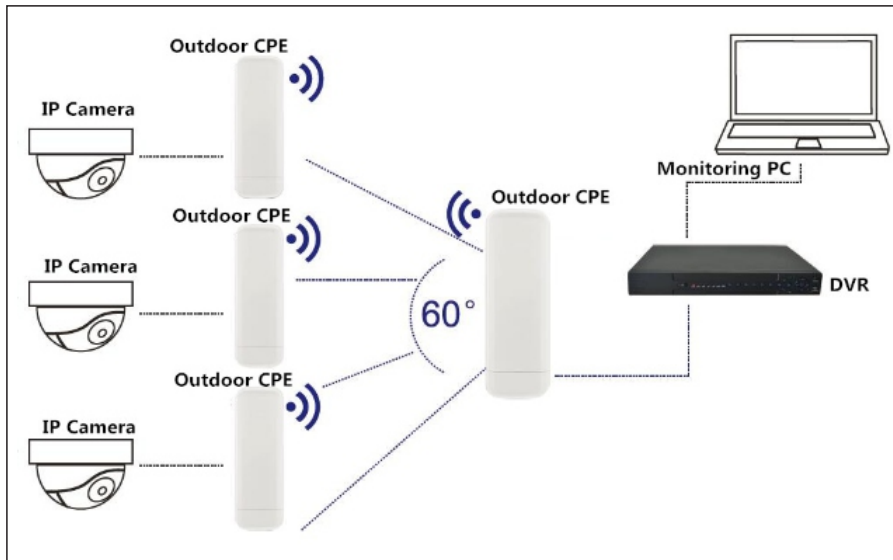
HARDWARE FEATURES	
Wireless	IEEE 802.11 a / n /ac, 2T2R 900M MIMO Technology
DDR2	64MB
Flash	SPI NOR 8MB
Interface	1*10/100Mbps RJ45 WAN Port 1*10/100Mbps RJ45 LAN Port 1*Switch to operate the operation mode (Right is AP mode, Left is Repeater mode) 1*Reset button, press 15 seconds to revert to default setting, press 1 second to finish operation mode configuration
Antenna	14dBi Panel Antenna
LED Light	Power, WAN, LAN, Wi-Fi, Signal Strength LED*4
Size	237mm*79.1mm*56.1mm
Power	POE 48V 0.5A or 24V 0.5A
DC	12V 1A
Power Consumption	< 8W
Waterproof Level	IP65
ESD Protection Standard	Contact Discharge: ±6KV; Air Discharge: ±8KV
Surge Protection Standard	Differential mode:±2KV
RF Data	
RF Data	802.11b/g/n/ac 5.150GHz ~ 5.850GHz
Data Rate	900Mbps
RF Power	< 27dBm
Firmware	
Operation Mode	Wireless AP, Wireless Bridge
Protocol/Standard	IEEE 802.3(Ethernet) IEEE 802.3u(Fast Ethernet) IEEE 802.11b/g/n/ac(5.8G WLAN)
Other Features	SSID: up to 4 Support SSID hide Wireless security: OPEN, WPA, WPA2, WPA-PSK, WPA2-PSK Wireless MAC filter: support white list(32) Wi-Fi timed off/on User isolation: wireless network isolation, AP insolation RF power adjustable Support Watchdog Technology With Wi-Fi Channel Analysis Tool Central Managed by WLAN Controller in AP Mode Remote Managed by Cloud Server in AP and Repeater Mode
Device Management	Backup the configuration information Restore the configuration information Revert to factory default Restart: Immediately restart or timed restart Firmware upgrade Time management: system time management and synchronization time. System Log
Physical Property	
Temperature	Working: -30°C ~ 55°C Storage: -0°C ~ 70°C
Humidity	5%~95% (typical)
Package:	Air Bridge 5-V2 unit 24V/0.5A PoE Adapter (If 48V PoE, no PoE adapter) User Manual LAN Cable Install Accessory

# WORKING DIAGRAM

## Point-to-Point connection



## Point to Multi-Point connection



[www.airpro.in](http://www.airpro.in)