



AIR M1200 Dual Band High Performance 11ac Wave2 Ceiling AP

AIR M1200

Boost your wireless signal and enjoy ultimate coverage

Quick Overview

AIR M1200 is a purpose-built indoor Ceiling/wall-mounting wireless access points specially designed for small and medium-sized businesses (SME). In today's fast-changing business environment, a reliable and high-performance Wi-Fi infrastructure plays a vital role to ensure business continuity. AIR M1200 with unique 802.11a/b/g/n/ac Wave2 Concurrent Dual-band design is optimized for high-density users in the SME environment which catering up to 256 users without any issue.

- Maximize ROI (Lifetime Free Cloud Management).
- Hybrid Management (Cloud / Controller / Standalone).
- Fast Provisioning by AirPro Cloud.
- Automated Radio Optimization by Big Data Technology.
- Stylish Design (Integrated Antenna).
- Concurrent Dual-band access points in AirPro SME AP Series.

What does this product do?

AirPro truly understands the challenges of having the best class of Wi-Fi in the SME environment. With the dual-band access points of the AirPro SME AP Series, a cost-effective way to increase your overall Wi-Fi network operational efficiency and enable highly secure wireless for employee and guest access.

In today's SME environment landscape, there are many challenges facing the business owners to provide good performance by using highly reliable Wi-Fi networks. It's also one of the most important internal business requirements, which also offers guest Wi-Fi services to visitors. Few common challenges of customers:

- Insufficient budget for Wi-Fi
- Require simple Wi-Fi deployment
- Lack of IT staff to manage the Wi-Fi
- Customers complain about the Wi-Fi

Enterprise Experience for SME - Free AirPro Cloud -

- Free public cloud services from AirPro to provide a centralized device management platform for SME customers.
- It provides a single pane of glass to deploy, manage & optimize your wired and wireless equipment without the need of specialized IT staff.
- Airpro Cloud also helps you deploy and monitor your network on-the-go.

Enterprise Support for SME -

- AirPro SME products are all bundled with an exclusive 2-year product warranty free of charge.
- AirPro customers can also enjoy complimentary professional online support which is staffed with AirPro certified experts to respond to your problems efficiently.

Key Features

AIR M1200 is specially designed for dense Wi-Fi usage environments like Restaurant, Hotel Reception & Conference Room, Student Lecture Hall, etc. Up to 256 clients per AP supported by AIR M1200, max wireless throughput up to 1167Mbps, this is taken advantage of IEEE 802.11a/b/g/n/ac Wave2 standard (WiFi 5) and unique concurrent dual-band radio design, for client access at concurrent. Each radio can effectively load balance the traffic without bringing additional interference for the environment.

Flexible Hybrid Management -

- AirPro SME AP offers the flexibility for SME to choose the mode of management. There are 3 different management modes for selection.
- For the AirPro Cloud option, no extra cost or firmware upgrade is required, which saves company expenses and time.

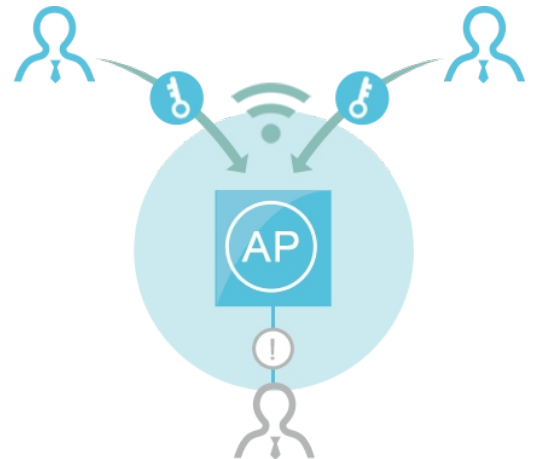
Stylish Design -

- SME APs all employ a simplistic and stylish design to fit different scenarios.
- The APs feature an integrated antenna design and hidden LAN port along with hidden cabling to hide the messy wires, which gives a professional and simplistic deployment style that is less noticeable.



PPSK Enterprise Authentication -

- For internal staff, it is hassled to maintain the pre-defined PSK and distribute it among them.
- Especially for the offboarding employees, potential Wi-Fi PSK leaked out could be harmful to your network.
- With AirPro PPSK, you now can easily provide different Wi-Fi passwords for each user.
- It is tied to individual end-user devices like laptops or smartphones and the same password can't be used by others.
- The possibility of a Wi-Fi password leak is eliminated completely.



Relevant Standard -

- Wi-Fi Alliance Certification (Support)
- Radio Standard (EN300 328 | EN301 893)
- EMC Standard (GB9254, EN301 489-1, EN301 489-17, EN 55032, EN 61000, EN 55035)
- Safety Standard (GB4943 EN/IEC 60950-1)

Social Media Login2 -

Social media is huge part of our lives, it is easier to and more convenient to let your guest login to your Wi-Fi by using their social media credential. AirPro Cloud provides an ease of use integrated Facebook for guest Wi-Fi login.

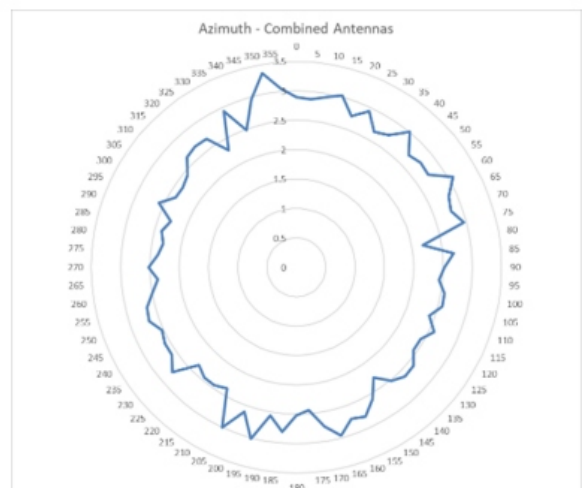
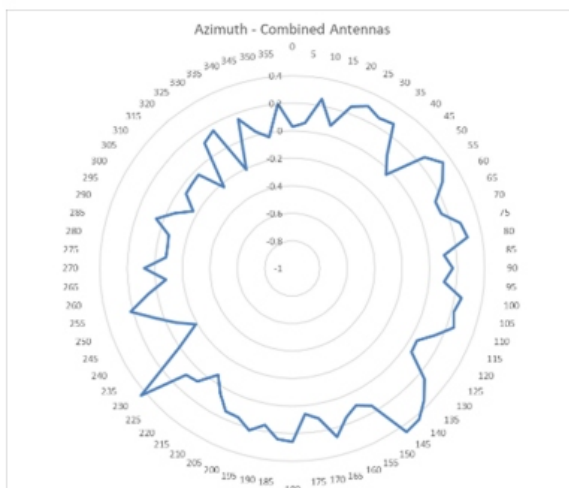
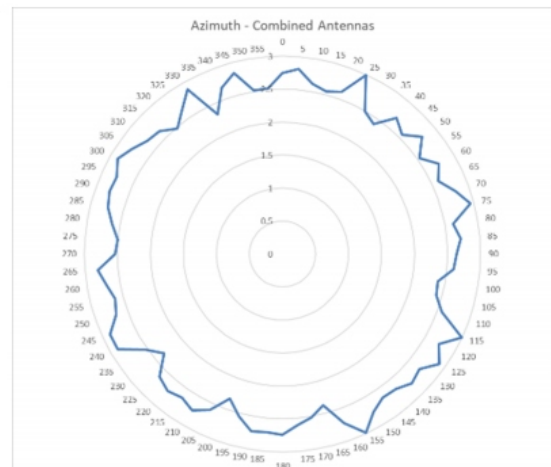
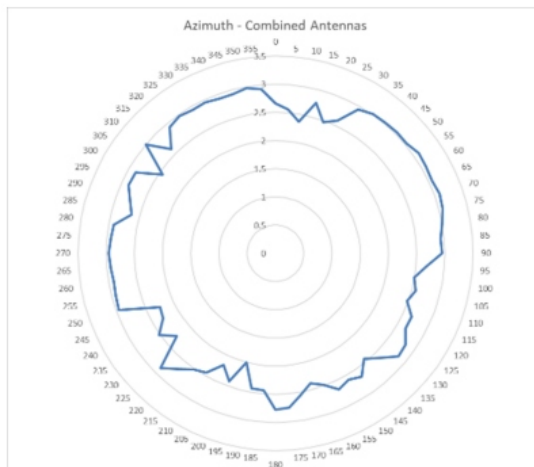


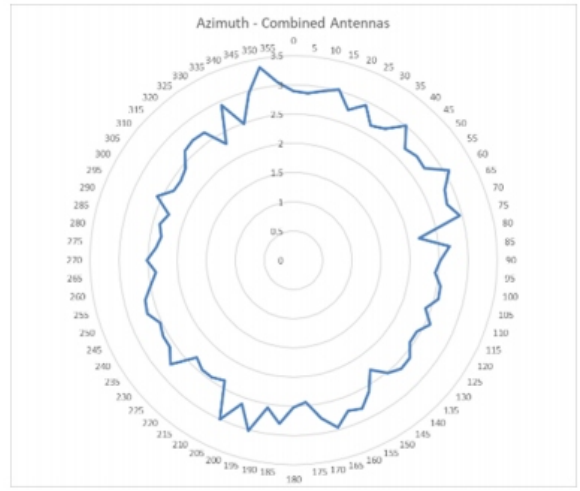
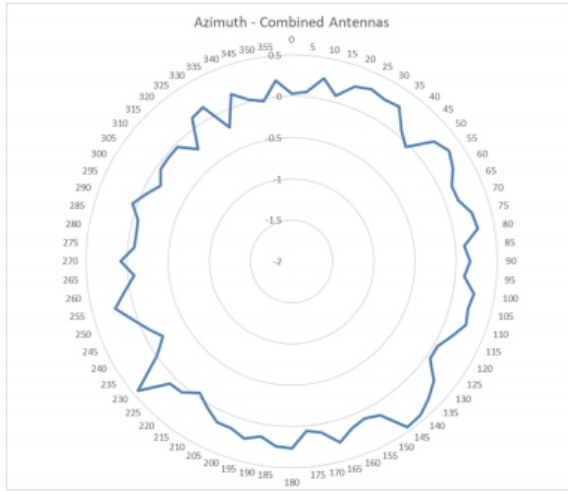
A simple captive portal with Facebook login button can be built easily by using step by step wizard. No web programming skill is required!

Antenna Patterns -

Horizontal planes (top view)

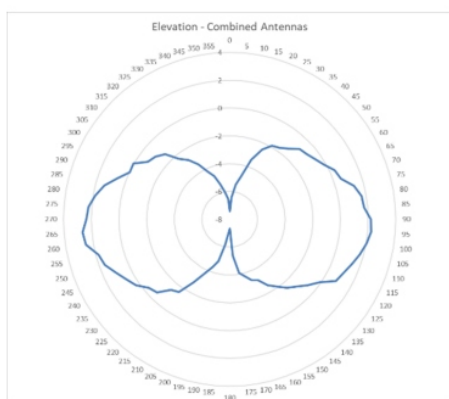
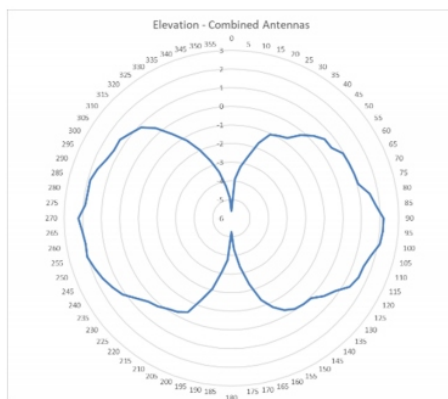
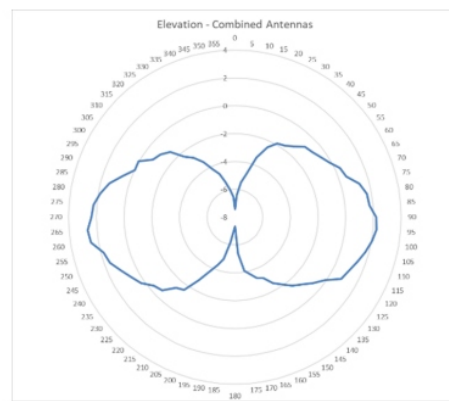
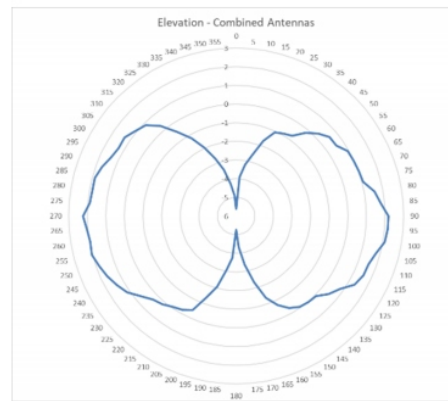
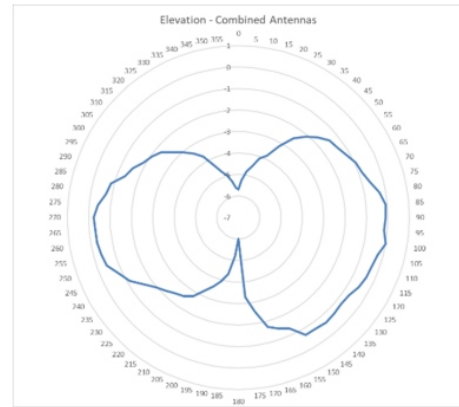
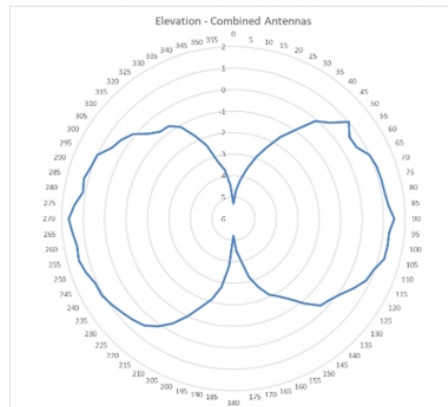
Below are the AIR M1200 series 2.4GHz and 5GHz azimuth antenna patterns:





Vertical (elevation) planes (side view, AP facing down)

Below are the AIR 1200 series 2.4GHz and 5GHz elevation antenna patterns:



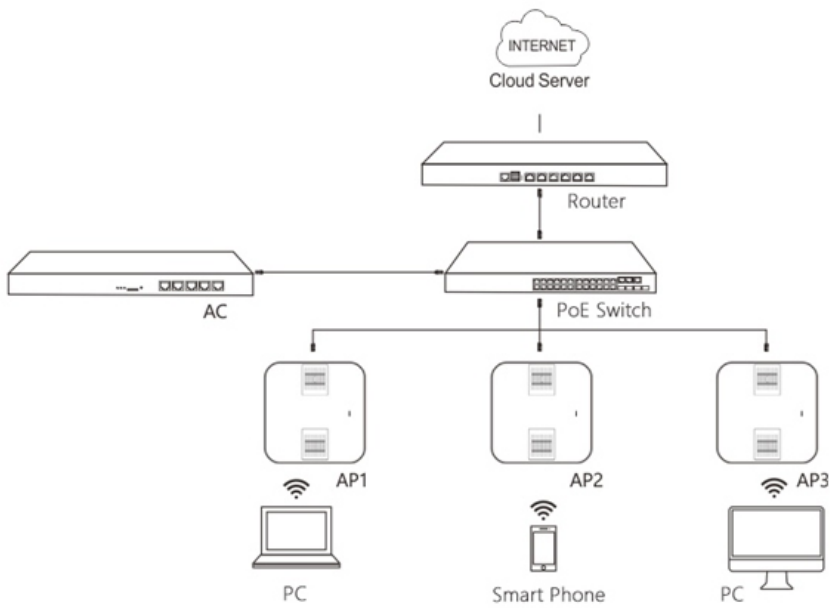
TECHNICAL SPECIFICATIONS

Hardware	
Target Deployment	Retail Chain Store, Small & Medium-sized Business Office, Boutique Hotel
Type	Indoor Ceiling/Wall-mounting
Basic Spec	
Radio	Concurrent Dual-band
Protocol	802.11a/b/g/n/ac, Wave2
Operating Bands	802.11b/g/n: 2.4GHz to 2.483GHz 802.11a/n/ac: 5.150GHz to 5.350GHz, 5.47GHz to 5.725GHz, 5.725GHz to 5.850GHz (vary depending on countries)
Antenna	Built-in Omni-directional Antenna
Antenna Gain	2.4G: 3dBi 5G: 3dBi
Max Throughput	Maximum throughput of 2.4G: 300Mbps Maximum throughput of 5G: 867Mbps Maximum throughput per AP: 1167Mbps
Modulation	OFDM: BPSK@6/9Mbps, QPSK@12/18Mbps, 16-QAM@24Mbps, 64-QAM@48/54Mbps DSSS: DBPSK@1Mbps, DQPSK@2Mbps, and CCK@5.5/11Mbps MIMO-OFDM: BPSK, QPSK, 16QAM, 64QAM, 256QAM
Receiver Sensitivity	11b: -96dBm (1Mbps), -93dBm (5Mbps), -89dBm (11Mbps) 11g: -91dBm (6Mbps), -85dBm (24Mbps), -80dBm (36Mbps), -74dBm (54Mbps) 11n: -90dBm (MCS0), -70dBm (MCS7), -89dBm (MCS8), -68dBm (MCS15) 11ac HT20: -88dBm (MCS0), -63dBm (MCS9) 11ac HT40: -85dBm (MCS0), -60dBm (MCS9) 11ac HT80: -82dBm (MCS0), -57dBm (MCS9)
Spatial Streams	2x2
Maximum Transmit Power	100mW
IP Rating	Ip41
Ports	1 10/100/1000BASE-T Ethernet uplink Port LAN1 supports PoE 1 Console Port
Power	
Power Supply	Local power supply (DC 5V/3A) PoE (802.3af)
Power Consumption	<12.95W
WLAN	
Maximum clients per AP	256
BSSID capacity	32
Remote Intelligent Perception Technology (RIPT)	Support
Intelligent load balancing based on the number of users or traffic	Support
STA control	Support
Bandwidth control	Support
Preference for 5GHz (band select)	Support

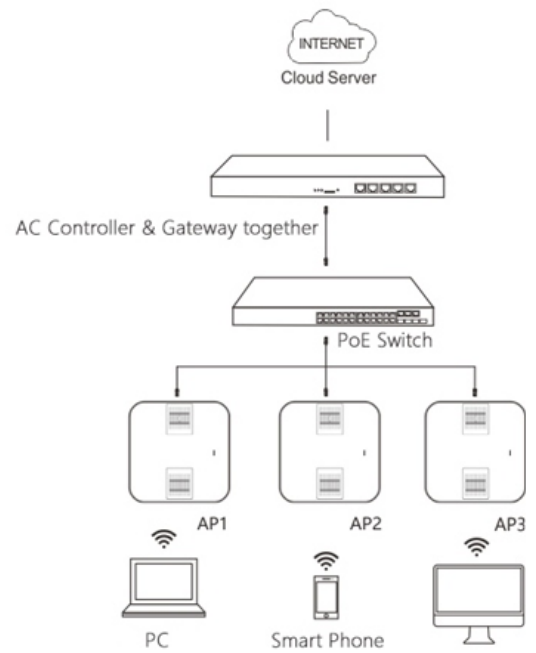
TECHNICAL SPECIFICATIONS

Band Steering (5G Priority)	Support
Security	
PSK, Web, 802.1x authentication	Support
PPSK authentication	Support
Data encryption	WPA (TKIP), WPA2 (AES), WPA-PSK, and WEP (64 or 128 bits)
PEAP authentication	Support
User isolation	Support
Rogue AP detection and countermeasure	Support
RADIUS	Support
Wireless Intrusion Detection System(WIDS)	Support
Wireless Intrusion Prevention System (WIPS)	Support
Routing	
IPv4 address	Static IP address or DHCP reservation
IPv6 address	Manual or automatic configuration
Multicast	Multicast to unicast conversion
Management and Maintenance	
Network management	SNMP v1/v2C/v3, Telnet, TFTP, Web management
Cloud AC management	Support
FAT/FIT switching	Support
External Characteristics	
Lock	Support
LED Indicators	1 LED indicator (red, green, blue, orange, and flashing modes, breathing flashing mode for smart device access, and the indicator can be switched off to enable silence mode)
Relevant Standard	
Wi-Fi Alliance Certification	Support
Radio Standard	EN300 328 EN301 893
EMC Standard	Gb9254 EN301 489-1 EN301 489-17 EN 55032 EN 61000 EN 55035
Safety Standard	Gb49433 EN/IEC 60950-1
Specifications	194 × 194 × 37
Weight	0.42kg
Work Environment	
Temperature	Operating Temperature: -10°C to 50°C Storage Temperature: -40°C to 70°C
Humidity	Operating Humidity: 5% to 95% (non-condensing) Storage Temperature: 5% to 95% (non-condensing)

AirPro Wi-fi Solution



Connection Diagram 1



Connection Diagram 2



www.airpro.in