



AirPro Intelligent Management Cloud

AirPro Cloud 9260

- All-in-one: authentication, managements and access control.
- Concurrent users 100K.
- High performance CPU and friendly GUI.
- AC 1+1 redundancy AC N+M redundancy.
- Distributed multi-level man-agement.

OVERVIEW

AirPro Cloud9260 (AirPro Intelligent Management Cloud) is based on cloud technology and provides a new model of wireless network access control and management. With the Cloud Management, it makes the complex network management into a simple, intelligent and visual practice, and improves the users wireless access and management experience.

Cloud 9260 is suitable for chain hotels, education organizations, shopping mall and enterprises with multiple branch offices, it can manage up to 5K wireless access points (APs).

KEY FEATURES & HIGHLIGHTS

Multi-service, High Performance and On-demand Scalability

Integrating AC, authentication, and network management:-

Cloud 9260 is an all-in-one cloud management platform that integrates authentication, wireless control, and many kinds of management like network management, equipment management, organization management, user account management.

The high data processing capability:-

Based on the high-efficient dual core operating system Cloud 9260 is capable of managing up to 5,000 APs, 10000 concurrent users, and over 500000 registered users, able to satisfy the needs of single user multi concurrent terminals under the application environment of large user volume and high concurrency in Metropolitan Area Network.

Linear scalability of function:-

The function module can be scaled linearly per manager's demands and may vary with the management plan of managers at different levels.

Friendly Man-machine Interaction

Intuitive interface operation:-

With an intuitive web interface design, Cloud 9260 can assist an administrator in user management, organization structure management, equipment management, administrator management, authentication setting, and network configuration.

Windows-style design:-

The operation interface is a Windows style one which is easy for operating. With densely packed functions, it is easy to understand and operate, facilitating users with fast installation and convenient use.

User-friendly Management

AP plus and play :-

Managed by Cloud 9260, AirPro smart APs support plug-and-play and zero configuration. Cloud 9260 undertakes all the management, control, and configuration of the APs. Network administrators do not need to separately manage or maintain a huge number of wireless APs.

Distributed management:-

Cloud 9260 is capable of providing hierarchical distributed management based on organization structure.

The headquarters administrator can implement centralized monitoring for network equipment, wireless users, and network state of every branch, the configuration of overall wireless network, upgrading of

overall equipment, unified authentication of user identity. The branch administrator can manage the equipment of the corresponding branch under the authorization of the headquarters administrator.

Flexible Built-in User Authentication

Multiple Flexible and Safe Authentication Modes:-

It supports Portal, SMS, We Chat, QR Code, Pre-shared Key, MAC, and other authentication modes.

Terminal Intelligent Identification:-

Cloud 9260 can identify the OS of a terminal, such as Apple iOS, Android, and windows, the size of a terminal, and the type of a terminal, such as mobile phone, laptop, and PC. Basing on these identifications, it can implement dynamic policies for different types of terminal and present a corresponding sized authentication page.

Built-in Authentication Server, easily realizing WEB Authentication:-

Cloud 9260 has the built-in portal server and user accounts, so it doesn't need an external portal server and radius server to do the WEB authentication, resulting in both simplified network deployment and reduced network construction cost.

PEAP user authentication:-

Protected Extensible Authentication Protocol (PEAP) authentication can provide a better user experience. The user needs to manually enter the username and passwords only during the first-time certification, the second time, and the subsequent certifications are performed automatically.

Flexible Visitor Authentication Management:-

The perfect built-in visitor management system has fully taken the industry demand of users into account and customized rich, convenient, and safe visitor management mechanisms accordingly:

- Authentication of Authorized QR Code for visitors.
- Authentication of Meeting QR Code for the meeting participants
- SMS Authentication for the mobile population to open a temporary account

Intelligent Control of Wireless Network

Intelligent RF Management:-

Cloud 9260 provides an automatic power and channel adjustment function. It employs particular RF detection and management algorithms to attain a better RF coverage effect. When the signals of an AP are interfered with by strong external signals, the AP may automatically switch to an appropriate operating channel under the control of the AC to avoid such interference. It also supports the black hole compensation mechanism. which adjust the AP power to cover the blind area re-sulted by the crashing of some APs

Intelligent control of terminals based on airtime fairness:-

This function makes sure that both the low-rate and the high-rate clients get relatively the same accessing time, which can avoid the low-rate clients to affect the AP overall performance by taking up too much accessing time.

HARDWARE SPECIFICATIONS

Item	Cloud 9260	
Physical Parameters	Service Port	5 gigabit Ethernet ports
		2 PCIe expansion slots, one slot supports 2 10G SFP+ ports, totally support 4 10G SFP+ ports
	Management Port	1 Console port (RJ-45)
		1 RJ-45 network management port
		2 USB 2.0 ports
	Dimension(L*W*H)	440*400*44mm
	Hardware	256G SSD
	Memory	DDR4 16G
	CPU	E3-1225 v5 3.30 GHz 4-core 4-thread
Power Source	Power Input	1+1 modular AC power
Environment	Operating Temperature	0°C~55°C
	Storage Temperature	-40°C~70°C
	Operating Humidity	5%~90% no condensation

SOFTWARE SPECIFICATIONS

Item	Cloud 9260	
Basic Performance	Maximum Manageable AP Number (set)	5K
	Basic Manageable AP Number (set)	32
	AP License step size	16, 32, 128
	Maximum On-line Concurrent User Number	100K
	Built-in Local Authentication Account	500K
	VLAN number	4096
	SSID number	500
Wireless Basic	Wireless Protocol Specification	802.11, 802.11a, 802.11b, 802.11g, 802.11n 802.11ac, 802.11h, 802.11ax
	Wireless Management Protocol	Support MAN, LAN, and Internet group network with AP
	CAPWAP Protocol	AP can discover and access automatically AP can update software version automatically AP can download configuration automatically
	User Roaming Switch Time	Less than 30ms
	High Reliability	Support 1+1 quick backup
	RF Management	Support country code setting Support manual/auto setting of transmitted power Support manual/auto setting of a working channel Support auto adjustment of transmission rate Support RF environment scanning, AP scanning surrounding RF environment information upon working Support wireless RF interference monitoring and evading Support 11n preferred RF strategy Support 20MHz and 40MHz channel bandwidth configuration Support air interface time protection under the circumstance of 11abg, 11n, and 11ac terminal hybrid access

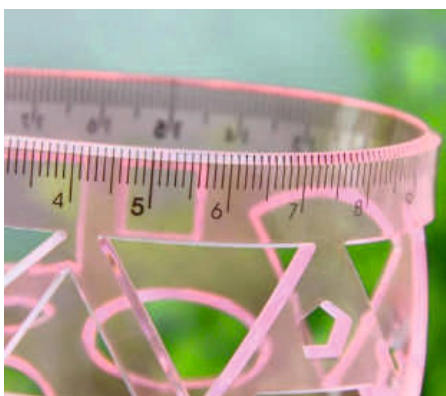
Item	Cloud 9260	
		Fair scheduling of terminal-based air interface time Frequency spectrum navigation (5G preferred) User online detection Auto-aging with no user traffic Inhibit client access to weak signal Mandatory roaming of weak signal in a client terminal
Access Authentication	Account Authentication	Support user-and password-based portal authentication
	We chat Authentication	Support WeChat connect Wi-Fi authentication mode
	Authorization QR Code Authentication	After connecting to the wireless network, a QR code page will automatically appear on the terminal. The visitor can have access to the internet by scanning the QR code with his mobile phone;
	Conference QR Code Authentication	Before a conference is held, a QR code will be generated according to the type and number of visitors and the time of the visit. Visitors can use internet service by scanning the QR code
	One-click Authentication	Users can have access to the internet by clicking the authentication page without entering accounts
	MAC Authentication	mac address authentication based on different wireless networks
	SMS Authentication	After entering his mobile phone number, the visitor receives an SMS with a password. Then, he needs to enter the password to implement authentication
	PEAP Authentication	When implementing authentication for the first time, the visitor needs to enter his username and password. When reconnecting the internet within the preset time limit, the visitor does not need to enter his username and password for authentication.

ORDER INFORMATION

Product	Description
Cloud 9260	Cloud 9260 Intelligent Cloud Management Platform is designed for multi-branch organizations, general education metropolitan area networks and companies in lack of IT management, co-operate with AirPro intelligent wireless APs, switches, gateways and other network equipment, to provide users with deployable, maintainable and expandable network. 1U device, provide 6* 10/100/1000Base-T ports and 2* PCIE expansion slots (could extend max 4* 10G SFP+ ports), 2 USB ports, one console port; Integrated 256G SSD disk, 16G DDR4 memory, redundant power.



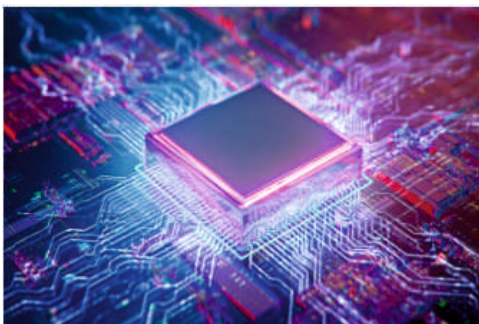
Distributed multi-level man-agement



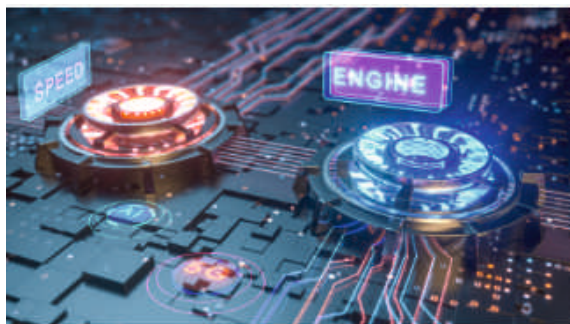
All-in-one: authentication,
managements
And access control



Concurrent users 100K



High performance CPU
And friendly GUI



AC 1+1 redundancy
AC N+M redundancy



www.airpro.in

